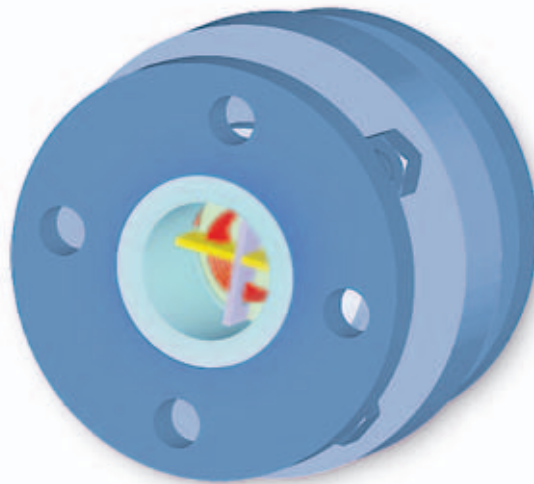




Blast Valve

Type RV 50

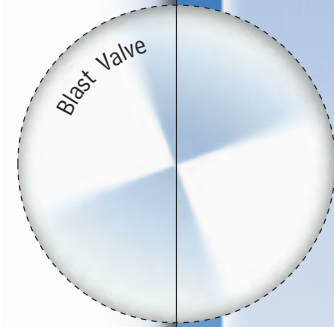


Overview

The Blast Valve RV 50 is a heavy duty blast valve which is intended to be installed into pipes. The RV 50 protects the pipes from penetration of blast waves caused by outside explosions. It withstands blast waves of 60 bar (842 psi) reflected pressure. This valve is designed to comply with the applicable Israeli, Singaporean, Swiss and Finnish Standards.

Description

The Blast Valve RV 50 is a heavy duty double action valve which protects against explosive and implosive waves. This valve is resistant against high and low temperature and high shock loads. Since it is produced from stainless steel it is very resistant against corrosion.

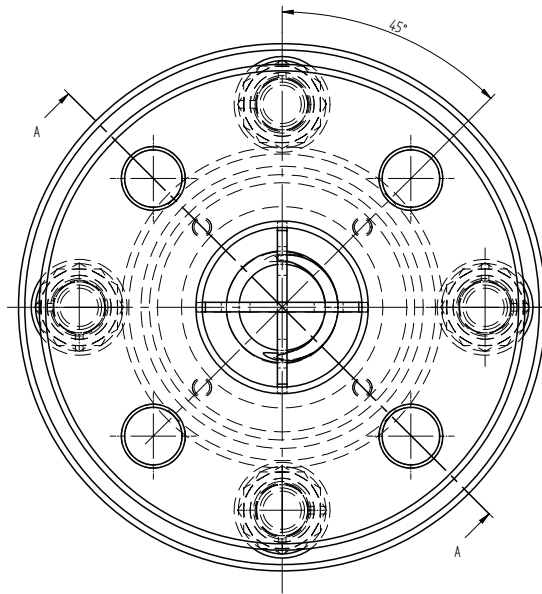
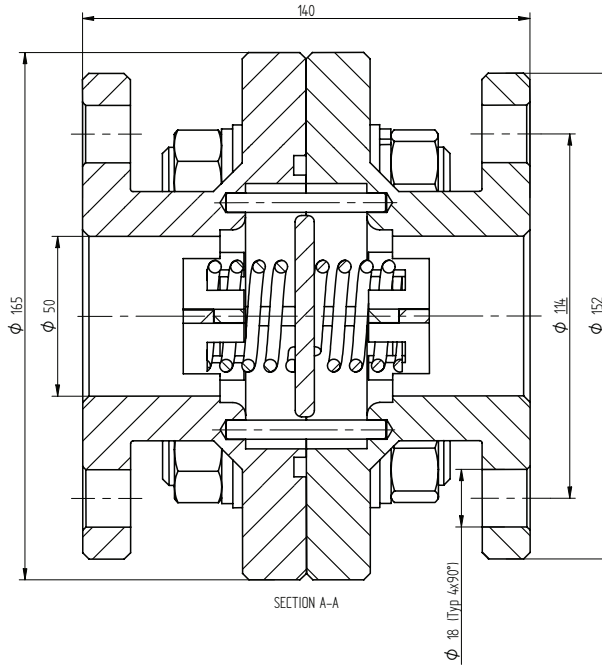
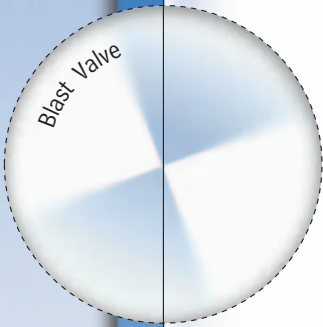


Usage

- Has to be installed at Pipes which enter blast protected shelter
- Should only be installed together with "Noah's Ark" equipment manufactured by Beth-El Industries to ensure maximum performance
- Protects the shelter against blast and vacuum waves after having been correctly installed



Beth-El Zikhron Yaaqov Industries Ltd.
 1 Avshalom Road, P.O. Box 166
 Zikhron Yaaqov 30951, Israel
 Tel.: +972-4-629 9999
 Fax: +972-4-629 1110



Certifications:

- Quality Control according to ISO 9001
- Quality Assurance according AQAP 120
- Environmental tests: MIL-STD 810 D

Specifications are subject to change without prior notice



Specifications RV 50:		
Outer diameter:	165 (6.5)	mm (inch)
Length:	140 (5.5)	mm (inch)
Pressure durability:	4000 (560)	kPa (psi)
Working temperature:	-15 to +70 (+5 to +160)	°C (°F)
Mechanical shock resistance:	60	g
Total weight:	11.0 kg (24.0 lbs)	kg (lbs)